



# PRODUCT BROCHURE

*"Be a yardstick of quality. Some people aren't used to an environment where excellence is expected." ~Steve Jobs*



## HYDRANT RANGE

- [Cast iron hydrants](#)
- [Other right angle hydrants](#)
- [Oblique hydrants](#)
- [100mm right angle hydrant](#)
- [Hi-efficiency hydrant](#)
- [Other hi-volume hydrants](#)
- [Hydrant assemblies](#)
- [Hydrant accessories and spares](#)
- [Underground hydrants](#)
- [Underground hydrant accessories and spares](#)
- [Boosting systems](#)
- [Booster connectors](#)
- [Adaptor range](#)
- [Pressure testing and flow meters](#)

## VALVES AND FITTINGS

- [Flanged RSV gate valves](#)
- [Socketed RSV gate valves](#)
- [Non return valves](#)
- [Cast iron fittings](#)
- [Butterfly valves](#)
- [Wafer check valves](#)
- [Fabricated fittings](#)
- [Galvanised fittings](#)
- [Gasket sets](#)
- [Stainless steel valves](#)
- [Flanged y-strainers](#)
- [Ball valves](#)
- [PVC fittings](#)

## FIRE PRODUCTS

- [Extinguishers](#)
- [Extinguisher accessories](#)
- [Hose reels](#)
- [Hose reels accessories](#)
- [Layflat hoses](#)
- [Fire cabinets](#)
- [Backing boards](#)
- [Extinguisher vehicle brackets](#)
- [Fire and safety signs](#)
- [First aid range](#)
- [Trolley units and accessories](#)
- [Super sounders](#)
- [Branch pipes](#)
- [PVC covers](#)
- [Fire blankets](#)
- [Key boxes](#)

## SPECIALISED SOLUTIONS

- [Grooved Fittings](#)
- [Fixed and Portable monitors](#)
- [Industrial Nozzles](#)
- [Fire Fighting Trailers](#)
- [Customised Solutions](#)





# CAST IRON HYDRANTS



- Standard Inlet: 80mm Female BSP,
- Other inlets available on request: 80mm Male BSP Thread, Flanged or Shouldered
- Outlets: 65mm Female Instantaneous Outlet with single “Lug” or Double “Lug”. Bayonet Outlet available for high theft areas.
- Spindle Material: Stainless Steel, for unsurpassed strength & durability
- Spindle Size: 16mm (to SABS 1128)
- Nitrile Rubber Seat(Woodlands Design and Patent)
- Working Pressure: 16 Bar
- The Body and Outlet are cast as one piece to avoid leaking joints and theft of outlets
- Available in both Tamperproof and Hand wheel.
- Due to Woodlands Fire being a Local Manufacturer all of our Hydrants are fully Serviceable. No Woodlands Product need to be thrown away.



[BACK TO INDEX](#)

[www.woodlandsfire.co.za](http://www.woodlandsfire.co.za)



# OTHER RIGHT ANGLE HYDRANTS



- Standard Inlet: 80mm Male BSP,
- Other inlets available on request: 80mm Female BSP Thread, Flanged or Shouldered
- Outlets: 65mm Female Instantaneous Outlet with single “Lug” or Double “Lug”.
- Spindle Material: Stainless Steel, for unsurpassed strength & durability
- Spindle Size: 16mm (to SABS 1128)
- Nitrile Rubber Seat (Woodlands Design and Patent)
- Working Pressure: 16 Bar
- The Body and Outlet are cast as one piece to avoid leaking joints and theft of outlets
- Available in both Tamperproof and Hand wheel.
- Due to Woodlands Fire being a Local Manufacturer all of our Hydrants are fully Serviceable. No Woodlands Product need to be thrown away.
- Hydrant Available in Both Brass and Stainless Steel.

[BACK TO INDEX](#)

[www.woodlandsfire.co.za](http://www.woodlandsfire.co.za)



# OBLIQUE HYDRANT RANGE



- The new range of Woodlands Upward and Downward Oblique are Patented, and are a viable alternative to the expensive gun metal hydrants
- Body: Fabricated Stainless Steel
- Coating: F.B.E Coated to ensure a long trouble-free life
- Hydrant can be serviced quickly and cost effectively.
- Seat: Nitrile rubber seat(Woodlands Design and Patent)
- Like all other Woodlands Fire Hydrants, is designed to be “full bore” opening, meaning, the spindle opens fully, allowing maximum flow rates.
- Available in Tamperproof and Hand-Wheel
- Inlet: your choice of 80mm Male BSP Thread, 80mm Female BSP Thread, 80mm Flange (drilled to your Choice)
- 100mm ANSI #150 Flanged Inlet also available



[BACK TO INDEX](#)

[www.woodlandsfire.co.za](http://www.woodlandsfire.co.za)



# 100mm RIGHT ANGLE HYDRANT



- Inlet: 100mm Female BSP or Flanged
- Outlets: 100mm 'Storz' or RAWT Thread
- Body Material: Fabricated Steel
- Spindle: 16mm(SABS 1128) Stainless Steel
- Plug Seat: Nitrile Rubber(Woodlands Fire Design and Patent)
- This is an alternative to the Hi-Efficiency Hydrant.
- The Body and Bonnet are manufactured as a complete inseparable unit, to prevent theft of bonnet assembly.
- Hand Wheel and Tamperproof models available.

[BACK TO INDEX](#)

[www.woodlandfire.co.za](http://www.woodlandfire.co.za)





# HI-EFFICIENCY HYDRANT



- Large Outlet: 100mm bore – Woodlands Patented Thread
- Small Outlet: 65mm London Round Thread(LRT)
- Cast Iron Hydrant body, Aluminium end-caps to prevent corrosion to threads.
- Caps secured to hydrant body by Cable.
- Integrally cast body to avoid leaks
- Large unrestricted waterways.
- Flanged drilled to B.S. 4505 Table “D” to fit most pipelines
- Hydrant is not pressurised when not in use.
- Flow Rates have been recorded in excess of 4500 litres/minute.



[BACK TO INDEX](#)

[www.woodlandfire.co.za](http://www.woodlandfire.co.za)



# OTHER HI-VOLUME HYDRANTS



Double Headed Hydrant:

- Customised outlets
- Customised Sizes
- Manufactured to requirements and provided with Test Certificates.

[BACK TO INDEX](#)

[www.woodlandsfire.co.za](http://www.woodlandsfire.co.za)



Type 4 Hi-Efficiency Hydrant:

- Approved for supply in the eThekweni region
- Manufactured to Municipal requirements
- Improved flow rates to older designs



Nelspruit Spec Hi-Efficiency Hydrant:

- Approved for supply in the Mbombela region
- Manufactured to Municipal requirements
- Customised design unique to Woodlands Fire







## Hydrant Assembly:

- Customised Hydrant Head
- Customisation of fittings and sizes
- Manufactured to requirements and provided with Test Certificates.
- Piping can be painted red or yellow on request

## 4-Way Pillar Hydrant

- 100mm – 200mm Flanged Inlet options available
- 100mm Suction outlet and 65mm Female instantaneous outlets

# HYDRANT ACCESSORIES & SPARES



- All Woodlands hydrants are manufactured Locally and all spares are available from our Factory in Honeydew.
- Multiple accessories are also available
  - 16mm Tee Keys
  - 12mm, 16mm, 19mm, 21mm Cross keys
  - Storz couplings
  - C-Spanners
  - Aluminium and plastic dust covers



[BACK TO INDEX](#)

[www.woodlandsfire.co.za](http://www.woodlandsfire.co.za)



# UNDERGROUND HYDRANTS



Multi-drilled 80mm Inlet flange with drilling to standard SABS hydrant drilling and T/16 flanged drilling requirements.

- Outlets made to SABS 1128 Specs and BS 750 L.R.T
- 65mm London Round Thread (L.R.T.);
- London Vee Thread (L.V.T.) Or Bayonet outlet to fit existing equipment.
- Body material: S.G.Iron
- Spindle material: Stainless steel for increased strength and durability.
- Left or Right hand closing.
- Plug Seat: Woodlands patented low maintenance design.

Hydrant is F.B.E. Coated for protection against the corrosive environments. Outlet bolts are Stainless steel for trouble free maintenance and added protection against corrosive environments.

[BACK TO INDEX](#)

[www.woodlandfire.co.za](http://www.woodlandfire.co.za)





# U/G HYDRANT SPARES & ACCESSORIES



- The design allows for easy and cost-effective maintenance of the hydrant.
- Replacement parts are available through our factory in Johannesburg.
- Woodlands have always encouraged clients not to dispose of their older/damaged hydrants but to rather send them to the factory where they can be fully refurbished, usually at half the price of a new hydrant.
- Accessories are also available:
  - Aluminum Standpipes – Bayonet/LRT/LVT inlets
  - Poker and Key – Length manufactured to client requirements
  - Cast Iron Covers for underground hydrants.



[BACK TO INDEX](#)

[www.woodlandfire.co.za](http://www.woodlandfire.co.za)



# BOOSTING SYSTEMS



## Woodlands Complete Installations Fire Protection Systems

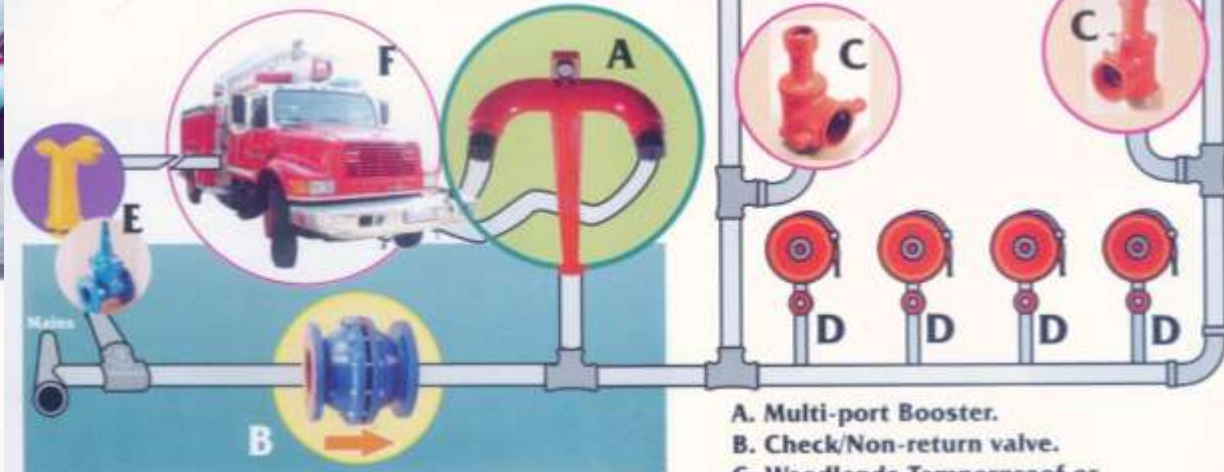
**FIRST Application**  
(‘Four heads are better than one’ principle)  
A simple application using a minimum number of men and fully utilising your existing pumper



The Woodlands Fire Multi-port Booster has been developed in association with relevant authorities and civil engineers to answer the most important aspects of fire protection systems. Not only proven on paper but in the field, the results show benefits of economy and speed, with overall efficiency levels.



**SECOND Application**  
**Ring Main System using a Multi-port Booster.**  
A permanent ring main application using a Woodlands Fire Multi-port Booster & Tamperproof Hydrants.



- A. Multi-port Booster.
- B. Check/Non-return valve.
- C. Woodlands Tamperproof or Hand Wheel Hydrant.
- D. Hose Reels.
- E. Pillar Hydrant & Isolating Valve.
- F. Pumper.

Using the Woodlands Fire Multi-port Booster allows ring mains pressure to be raised above city mains pressure by pumper. Obviously numerous other applications and situations could be catered for to suit a variety of environments. This basic overview gives some idea of general application.

[BACK TO INDEX](#)

[www.woodlandsfire.co.za](http://www.woodlandsfire.co.za)



# MULTI-PORT BOOSTERS



- Multi ports for bulk water supply (Single Ports, Two Ports and Multiple Ports available to Customer request)
- Standard couplings to fit existing industry equipment's.
- Bronze Fittings to avoid Corrosion.
- Fusion Bonded Epoxy Coating Available for corrosive environments
- Rubber Caps Secured with a Chain.
- Gauges are fitted to the Multi-Port Boosters to monitor Working Pressure
- Unit Has a Flanged Inlet Drilled to B.S. 5404 - T/16 to fit Most Pipelines. (Other Drillings available on request)
- This Item carries Patents and Registered Designs – F2017/00993, These are legally Enforced.
- 65mm Brass Booster Connectors available separately



[BACK TO INDEX](#)





# RANGE OF ADAPTORS



- Large range of customized adaptors available



Product Code: STO-45FIA



100mm Stb to 45mm Female Instantaneous Adaptor



[BACK TO INDEX](#)

[www.woodlandsfire.co.za](http://www.woodlandsfire.co.za)



# PRESSURE TESTING & FLOW METERS



- Hydrant Flow Gauge is universally used by Water Engineers and Fire Service Authorities in the appraisal of piped water supply for fire fighting, development planning, and as a probe for investigating the ageing conditions of water mains and the consequence of overloading. In all of these applications, there is no better cost effective substitute



- 65mm Male Instantaneous coupling and is designed to fit the 65mm Female instantaneous connections available on Fire Hydrants
- Is able to read static water pressures from 0-2500kpa
- Can be customized to fit Storz and RAWT hydrants

[BACK TO INDEX](#)

[www.woodlandsfire.co.za](http://www.woodlandsfire.co.za)



# FLANGED RSV GATE VALVES – 664 TYPE



- Non-Rising Spindle
- Fusion Bonded Epoxy Coating
- EPDM Rubber Lined S.G Iron Gate
- Flange Drilled to T/16 or Table D
- Left hand or Right hand Closing
- Cap Top or Handwheel operated
- Resilient Sealed to EN 1171
- Manufactured to SANS 664 Spec
- 50-450mm Sizes available – large available on request



[BACK TO INDEX](#)

[www.woodlandsfire.co.za](http://www.woodlandsfire.co.za)





# SOCKETED RSV GATE VALVES – 664 TYPE



- Non Rising Spindle
- Fusion Bonded Epoxy Coating
- EPDM Rubber Lined S.G Iron Gate
- Socketed Ends
- Left hand or Right hand Closing
- Cap Top or Handwheel operated
- Resilient Sealed to EN 1171
- Manufactured to SANS 664 Spec
- 50-450mm Sizes available – large available on request

[BACK TO INDEX](#)

[www.woodlandsfire.co.za](http://www.woodlandsfire.co.za)



# NON RETURN VALVES



Designed to BS5153

- Complies to SANS 1551-2 2007
- SG Iron Body
- EPDM Encapsulated SG Iron Gate with Stainless Steel Swing Arm
- Coating: FBE – 250 Micron (Signal Blue)
- PN16



[BACK TO INDEX](#)

[www.woodlandsfire.co.za](http://www.woodlandsfire.co.za)



# CAST IRON FITTINGS



- Lightweight.
- Can handle high pressures/stress.
- Spheroidal Graphite (SG) Iron Fitting For PVC Pipe
- Coating Options:
  - Bitumen Dipped
  - Fusion Bonded Epoxy (FBE)
- Wall Thickness In Accordance With DIN16451 PT1
- Seals Perfectly At Low and High Pressures.
- Rated 25 Bar Pressure and, tested 40 Bar Pressure.



[BACK TO INDEX](#)

[www.woodlandfire.co.za](http://www.woodlandfire.co.za)





# BUTTERFLY GATE VALVES



- Wafer disc available in Nickel-plated Cast Iron, Bronze and
- CF8M (316) Stainless Steel
- Epoxy powder coated body
- Blow out proof Stainless steel stem
- Integral EPDM cartridge type replaceable liner
- Hand lever or gearbox operated versions available
- SABS tested and JASWIC compliant
- BS5155 compliant
- 1600Kpa (16 Bar)
- Drilling BS4504

[BACK TO INDEX](#)

[www.woodlandsfire.co.za](http://www.woodlandsfire.co.za)



# WAFER CHECK VALVES



- Check valves are used for preventing back flow of liquid medium in pipes. The valves close automatically with the return flow of the liquid medium.
- PN16



[BACK TO INDEX](#)

[www.woodlandsfire.co.za](http://www.woodlandsfire.co.za)



# FABRICATED FITTINGS



- Custom fabricated pipe fittings
- Manufactured to required specification
- Fusion bonded epoxy coated blue or red to requirements

[BACK TO INDEX](#)

[www.woodlandsfire.co.za](http://www.woodlandsfire.co.za)





# GALVANISED FITTINGS



- Wide range of mild steel fittings with a Galvanized coating



[BACK TO INDEX](#)

[www.woodlandsfire.co.za](http://www.woodlandsfire.co.za)





- Full Faced Rubber Gaskets
- Ring faced rubber gaskets
- Hot Dipped Galvanized Bolts, Washers and Nuts

# STAINLESS STEEL VALVES



2 PIECE BALL VALVE



3 PIECE BALL VALVE



[BACK TO INDEX](#)

[www.woodlandsfire.co.za](http://www.woodlandsfire.co.za)







Face to Face dimensions according to DIN3202, F1

- Flange dimensions according to DIN2501 PN 10/PN16
- Nominal Pressure PN10/PN16
- The mesh of wire screen or the hole dimensions of the perforated screen can be as per the customer's requirements
- Bonnet and body metal to metal with o-ring type seal
- Straight through nut & bolt – easy disassembly and assembly for cleaning screen

# BALL VALVES



## NICKLE PLATED BRASS LEVER BALL VALVES

- MAXIMUM WORKING PRESSURE 25 BAR (360PSI)
- TEMPERATURE RATING: 0°C- 120°C
- USES: OIL, WATER & GAS



## BRASS Gate Valves

- MAXIMUM WORKING PRESSURE 12.5 BAR (180PSI)
- TEMPERATURE RATING: -20°C- 100°C
- USES: OIL, WATER & GAS



[BACK TO INDEX](#)

[www.woodlandsfire.co.za](http://www.woodlandsfire.co.za)



## Wide Range of Fabricated PVC Fittings Available

- Bends
  - Tees
  - Flanged Adaptors
  - End Caps
  - Crosses
  - Reducers
- ... And Many More





# EXTINGUISHERS



- Fire Extinguishers:
- Various Fire extinguishers available;
- DCP
- CO2
- Wet Chemical (Fry Fighter)
- Foam
- Water
- Stainless Steel
- Automatic



[BACK TO INDEX](#)

[www.woodlandfire.co.za](http://www.woodlandfire.co.za)



# EXTINGUISHER ACCESSORIES



All Accessories for extinguishers are available

- Long Handles
- Discharge Hoses
- Powder
- Brackets
- Gauges
- O-Rings
- Nozzles

[BACK TO INDEX](#)

[www.woodlandsfire.co.za](http://www.woodlandsfire.co.za)



# HOSE REELS



- 30M Hose Reel
- Fixed type and swing way type available
- PVC and Rubber Hoses available
- Plastic or Aluminum Nozzle
- SABS APPROVED



[BACK TO INDEX](#)

[www.woodlandsfire.co.za](http://www.woodlandsfire.co.za)



# HOSE REELS ACCESSORIES



All Accessories for Hose Reels are available

- CP Valves
- Nozzles
- PVC and Rubber Hoses
- Waterways
- Draw Shackle
- And Many More

[BACK TO INDEX](#)

[www.woodlandsfire.co.za](http://www.woodlandsfire.co.za)





# LAYFLAT HOSES



Blue Lay Flat Hose

- 16 Bar Rated
- Rubber Lined
- Couplings Included



White Lay Flat Hose:

- 13 Bar Rated
- Canvas Hose
- Couplings Included
- Other Layflat hoses available.



Red Lay Flat Hose

- 16 Bar Rated
- Rubber Lined
- Couplings Included

[BACK TO INDEX](#)

[www.woodlandsfire.co.za](http://www.woodlandsfire.co.za)



# FIRE CABINETS



- Full Range of Cabinets available
- Steel, Stainless Steel, PVC, Fibreglass and Clear Plastic
- For all your fire product needs, extinguishers, hose reels Layflat hoses and many other options available.



[BACK TO INDEX](#)

[www.woodlandsfire.co.za](http://www.woodlandsfire.co.za)



# EXTINGUISHER VEHICLE BRACKETS



Vehicle brackets are available for the following ranges:

DCP Range

- 9kg
- 4.5kg
- 2.5kg
- 1.5kg
- 1kg

CO2

Range

- 5kg
- 2kg



[BACK TO INDEX](#)

[www.woodlandsfire.co.za](http://www.woodlandsfire.co.za)



# TROLLEY UNITS AND ACCESSORIES



## Trolley Units available:

- DCP
- Foam
- CO2

## Trolley Unit accessories available:

- Nozzles
- Discharge hoses
- Valve assemblies
- Powder
- Foam
- And so much more...

[BACK TO INDEX](#)

[www.woodlandfire.co.za](http://www.woodlandfire.co.za)







- Vehicle First aid Kits complete with the bag and Contents
- Metal First aid box available complete with contents
- Contents and box can be sold separately



- Manual Sounders available for evacuation procedures.
- Box, sounder and horn sold as a complete unit or separately.





## Fire Fighting Nozzles available

- Straight Thru
- Multiple Adjustable options available
- 9mm and 16mm Orifice
- 65mm Male Instantaneous connection



## UV Resistant PVC Covers available:

Cost effective and easy to install alternative to Cabinets

- Hose Reels
- 4.5kg Extinguisher
- 9kg Extinguisher
- CO2 Extinguisher options available







## Full Range of Fire Blankets available

- 900mm x 900mm
- 1m x 1m
- 1.2m x 1.2m
- 1.2m x 1.8m
- 1.8m x 1.8m

[BACK TO INDEX](#)

[www.woodlandfire.co.za](http://www.woodlandfire.co.za)



Metal Key boxes available for use of storage of keys required in emergency evacuations.

Glass for the Keybox can be sold separately



# BACKING BOARDS



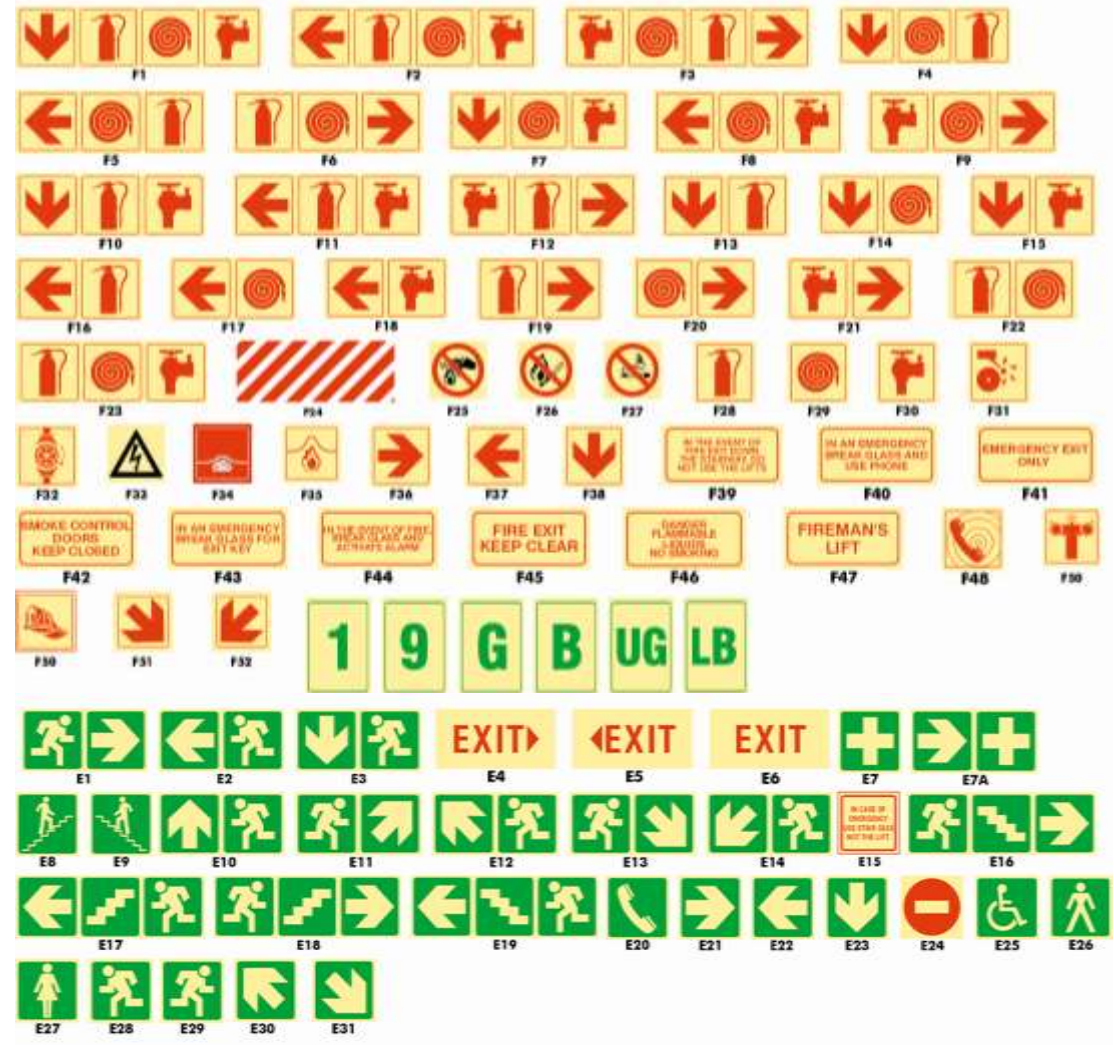
Range of Saligna backing boards available, from 450mm to 900mm lengths

[BACK TO INDEX](#)

[www.woodlandsfire.co.za](http://www.woodlandsfire.co.za)



# RANGE OF FIRE AND SAFETY SIGNS



[BACK TO INDEX](#)

[www.woodlandsfire.co.za](http://www.woodlandsfire.co.za)







## Full Range of Grooved Fittings

- Couplings
- Elbows
- Flanged Adaptors
- Tees
- End Caps
- Reducers

# FIXED AND PORTABLE MONITORS



[BACK TO INDEX](#)

[www.woodlandsfire.co.za](http://www.woodlandsfire.co.za)



# INDUSTRIAL NOZZLES



[BACK TO INDEX](#)

[www.woodlandsfire.co.za](http://www.woodlandsfire.co.za)





# FIRE FIGHTING TRAILERS



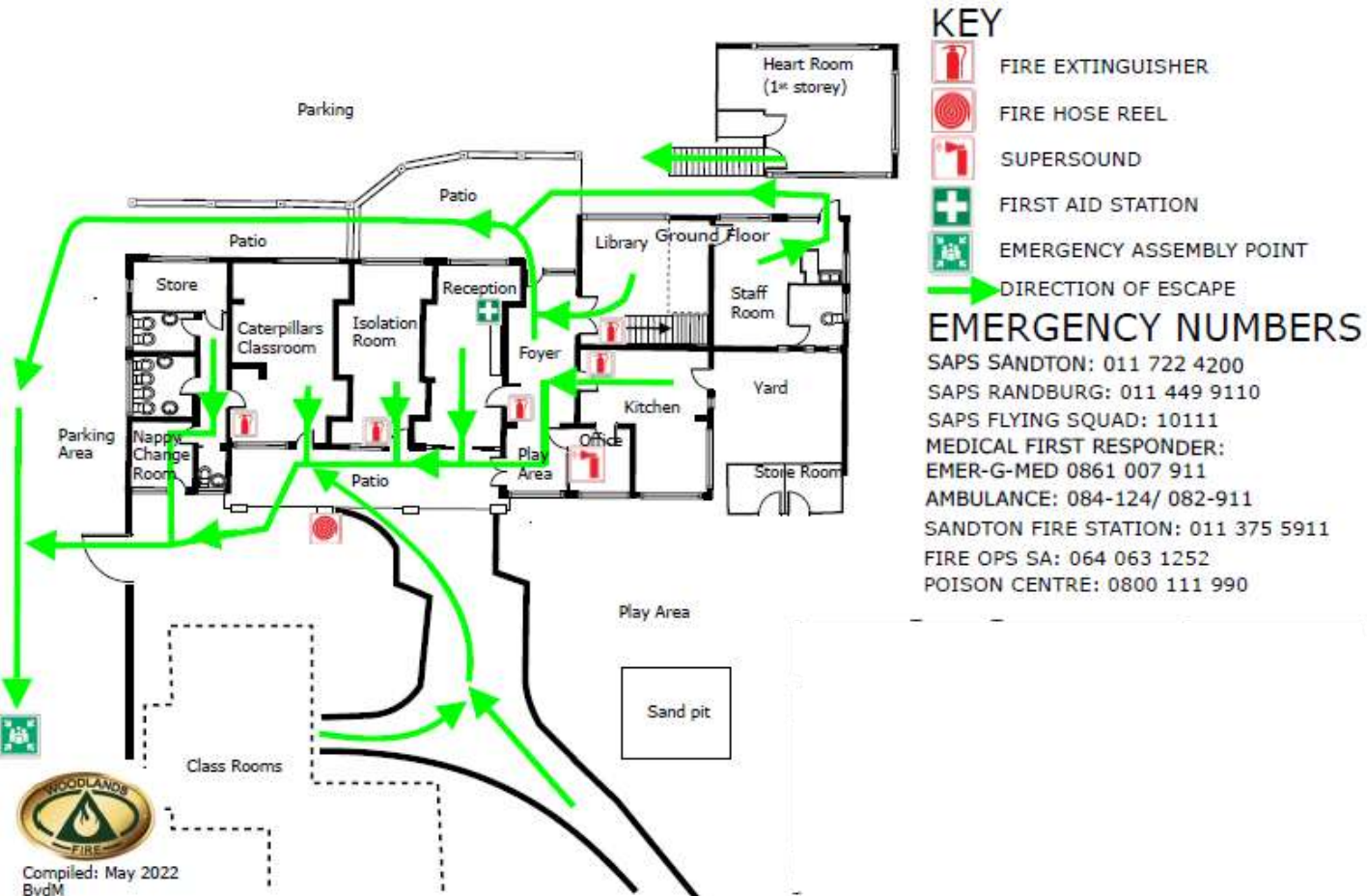
[BACK TO INDEX](#)

[www.woodlandsfire.co.za](http://www.woodlandsfire.co.za)





# CUSTOMISED SOLUTIONS



Fire fighting training

[BACK TO INDEX](#)

[www.woodlandsfire.co.za](http://www.woodlandsfire.co.za)





WOODLANDS ENGINEERING PTY LTD t/a

VAT; 4110120229  
CC NO: 2000/027467/07

# WOODLANDS FIRE

DESIGNERS AND MANUFACTURERS OF FIRE HYDRANT, VALVES  
AND ASSOCIATED FIRE FIGHTING EQUIPMENT

TEL: 011 794 9033

FAX: 011 794 9034

[reception@woodlandsfire.co.za](mailto:reception@woodlandsfire.co.za)

[admin@woodlandsfire.co.za](mailto:admin@woodlandsfire.co.za)

CNR YACHT & VLAGSKIP  
STREETS  
LASER PARK, HONEYDEW  
P.O.BOX 3322,  
HONEYDEW, 2040



FIND US ON:

